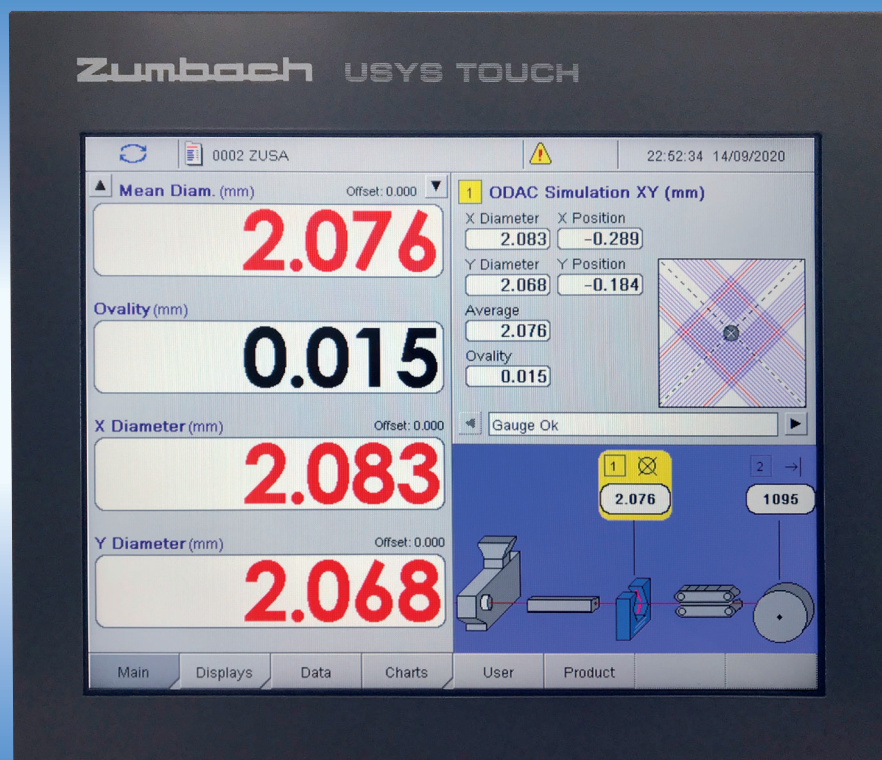


## USYS Touch



Economic Processor for Measurement, Data Acquisition, Control and Display of:

- Diameter / Ovality
- Eccentricity / Diameter
- Capacitance

## THE COST EFFECTIVE BUT POWERFUL PROCESSOR

The USYS Touch has been developed for use with a single sensor such as ODAC for diameter, ODEX for non-contact eccentricity/concentricity/diameter or CAPAC for capacitance measurement. It uses the same technological platform that has been proven with the multi-sensor USYS processors, however, supporting one measuring point only allows for a very cost effective and compact solution. Fault detectors such as KW lump/neckdown units and Spark Testers, as well as a proximity switch for length information can also be connected. The processor communicates with a Host and can be integrated into networks in the same way as the well-known USYS models.

### Multiple Features and Functions

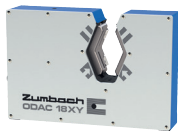
- Complete system for one measuring point
- Industrial, rugged design
- User friendly
- Operator interface with choice of languages
- Bright high resolution colour 15" LCD TFT Touch screen
- Unlimited number of product recipes
- Continuous measurement and display
- Monitoring of the limit values
- Recipe management
- Communication with a computer
- Strip chart

### Optional Feature and Function Modules

- Control and material savings
- Statistics and data logging
- SPC control charts
- USYS Data Log, data logging
- USYS WebServer
- USYS Report Manager
- OPC UA, communication protocol

## SENSORS WHICH CAN BE CONNECTED TO THE PROCESSOR

ODAC for diameter;  
1, 2 or 3 axis models



ODEX 10 for concentricity/  
eccentricity and diameter



CAPAC  
for capacitance



KW for  
lumps/neckdowns



Spark Tester for  
cable insulations



## COMMUNICATION AND NETWORKING

Today, the ability of sensors or processors to communicate with other computers or networks is essential. ZUMBACH offers a variety of ODAC versions, interface units and USYS software to satisfy almost any need and concept.

### USYS Data Log

The USYS Data Log is a WINDOWS™ based software for easy data collection from one or several ZUMBACH processors and for saving the data in text or Excel™ files. USYS Data Log communicates to the ZUMBACH processors via a serial RS-232 port or an Ethernet TCP/IP connection.

Windows™ and Excel™ are trademarks of Microsoft Corporation.

### USYS Report Manager

The USYS processor can store in a local or external memory the detailed statistical data calculated for the Piece, Lot and SPC periods. In this way it is possible to recover and visualize the data of previous productions and reproduce the quality control printed reports.

### USYS OPC UA Server

Values from a USYS processor of type USYS 200, USYS Touch or USYS IPCe are available to higher-level customer systems via OPC UA thanks to the OPC UA server integrated in the USYS software. This also includes the management of data from devices that are connected to the USYS

processor, which thus acts as a gateway between the devices and higher-level customer systems.

### USYS Web Server

With this software integrated by default, a USYS processor can be addressed via an Ethernet TCP/IP network (LAN, Intranet, Internet), using a standard browser.

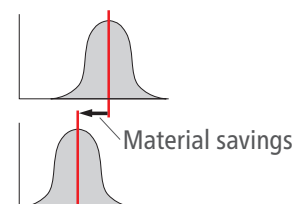
### SIGMA EXPERT Controller and CpK Pilot

Intelligent and self-adjusting systems for dynamic control even during start-up. By means of the CpK Pilot, the nominal value is automatically adjusted to the lower limit given by statistical computations.

**This means important material savings!** (Only available for JACKETMASTER systems).

### Control

Every USYS Touch offers 1 optional SIGMA EXPERT controller with Static Regulating Device (SRD) or relay output. The SIGMA EXPERT controller is self-optimizing. It does not require further parameter optimization and even provides dynamic regulation of the process during start-up.

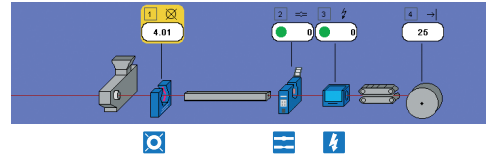


# FOR THE WIRE, CABLE, PLASTICS AND RUBBER INDUSTRIES AND SIMILAR

## Typical Application Configurations:

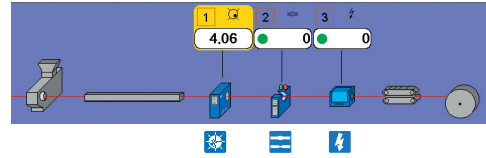
### Diameter Measurement and Additional Input from Spark Tester and Lump / Neckdown Detector.

Speed or extruder screw rpm and full measuring value and fault report. Diameter measurement and data collection for complete production runs.



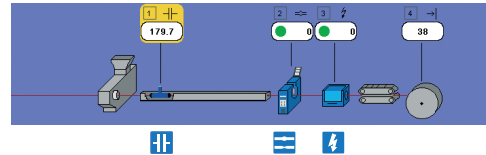
### Diameter/Eccentricity Measurement and Additional Input from Spark Tester and Lump/Neckdown Detector.

Diameter and eccentricity measurement with data collection and fault report.



### Capacitance Measurement and Additional Input from Spark Tester and Lump / Neckdown Detector.

Select capacitance as the most important parameter to monitor, e.g. for data cables.



# FOR THE STEEL INDUSTRY

The USYS Touch is available with special "Bar" Software. This feature makes it suitable for non-continuous processes such as test lines (NDT) for steel and metal rod and bar, for tube and pipe, and for peeling and centerless grinding of steel rod and bar. The family of ODAC laser diameter measuring heads allows an optimal measurement of diameter or ovality according to choice. Depending on the kind of process a controller can be used e.g. for automatic compensation of wear etc. The start and end of a bar can be suppressed and the setting is adjustable. The measuring statistics can be applied to individual bars.

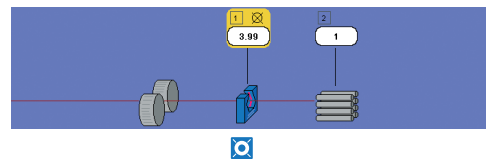
## Typical Processes:

### QC Stations (NDT)

For mandrel bar or general final testing of bar and tube. Used with a 1, 2 or 3 axis ODAC measuring head.

### Peeling and Centerless Grinding

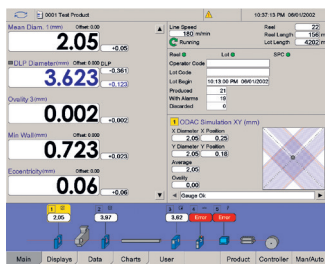
For use with an ODAC head measuring for precise measurement of the diameter and ovality at the peeling machine or at the transport band after the machine.



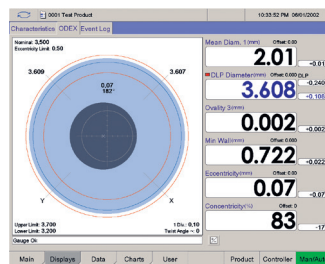
### Drawing, Rolling and Straightening Processes

For general use together with an ODAC measuring head in processes, which require continuous measurement and monitoring of diameter (or also width and height).

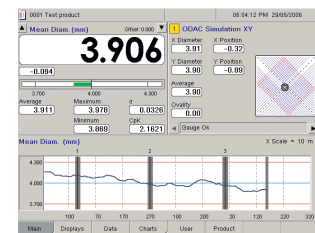
# TYPICAL SCREENS



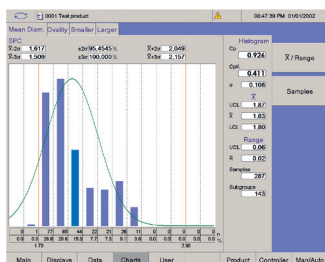
Diameter and concentricity/eccentricity information with ODEX 10



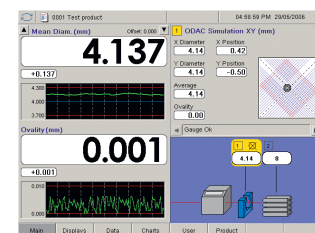
Concentricity display ODEX 10



Rolling processes and similar: mean diameter, statistics summary, characteristic strip-chart information

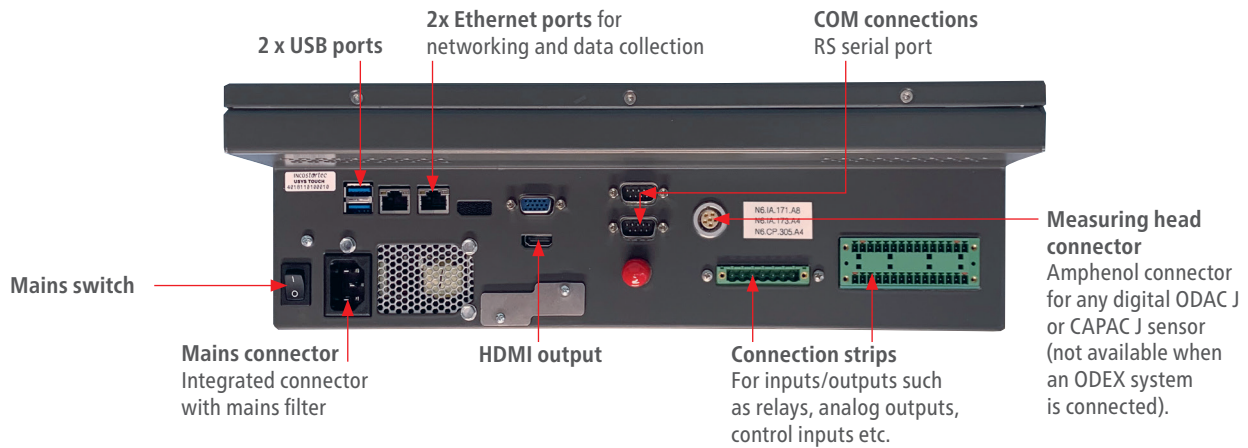


Statistics, full SPC pages: Histogram or X-Bar/Range

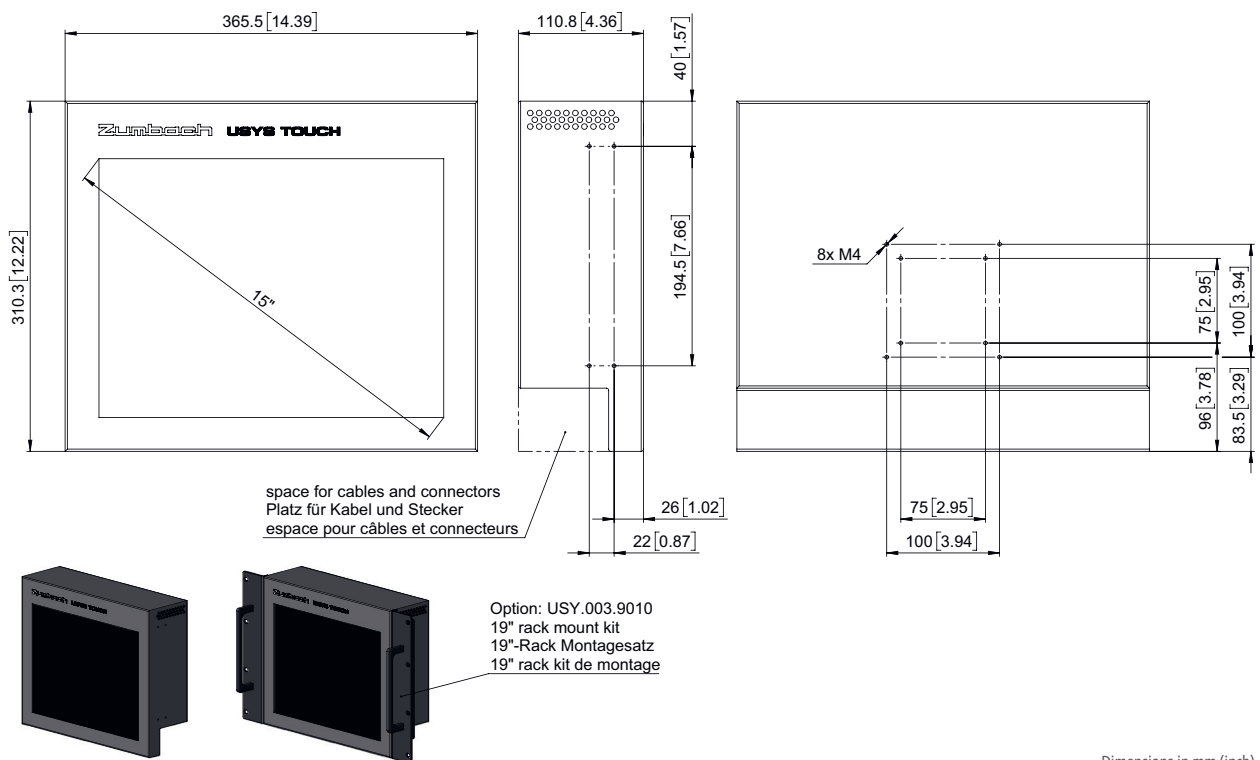


Rolling processes and similar: diameter and position information

## REAR PANEL FEATURES



## DIMENSIONS



Dimensions in mm (inch)

## SPECIFICATIONS

### Mains

90...135/180...265 VAC (auto-select), 47...63 Hz

### Operating temperature

0...50° C (32...120° F)

### Weight

7.09 kg (15.63 lbs.) (without case)

### Scope of delivery (basic configuration)

Industrial PC with 2 x Ethernet, 2 x USB, 2 x RS-232/-422, 15" LCD TFT Touch screen, 32 MB Compact Flash Card. Multi-function board for processing the data of 1 ODAC, CAPAC or ODEX gauge, as well as 3 relay outputs, 5 digital outputs, 5 digital inputs, 1 analog output and 1 HDMI output.



### VGA Adapter

(art. no. A15 602 2290)

The VGA monitor can only be connected with this adapter. The VGA connection on the device cannot be used, so it is covered.

\* Specifications are subject to change without notice

## WORLDWIDE CUSTOMER SERVICE AND SALES OFFICES

### Headquarter:

Zumbach Electronic AG  
P.O. Box  
CH-2552 Orpund  
SWITZERLAND  
Tel.: +41 (0)32 356 04 00  
sales@zumbach.ch

BENELUX, sales@zumbach.be  
CHINA P.R., sales@zumbach.com.cn  
CZECH REPUBLIC, jvorlicek@zumbach.cz  
FRANCE, ventes@zumbach.com.fr  
GERMANY, verkauf@zumbach.de

INDIA, sales@zumbachindia.com  
ITALY, zumit@zumbach.it  
SPAIN, gestion@zumbach.es  
TAIWAN, info@zumbach.tw  
UK, sales@zumbach.co.uk

### North American Headquarter:

Zumbach Electronics Corp.  
140 Kisco Avenue  
Mount Kisco, NY 10549-1407  
Phone +1 914 241 7080  
USA  
sales@zumbach.com

