

Zumbach

SWISS PRIME MEASURING SINCE 1957

USYS 20



**Economic Processor for Diameter or Capacitance Measurement,
Data Acquisition, Processing, Display & Control**

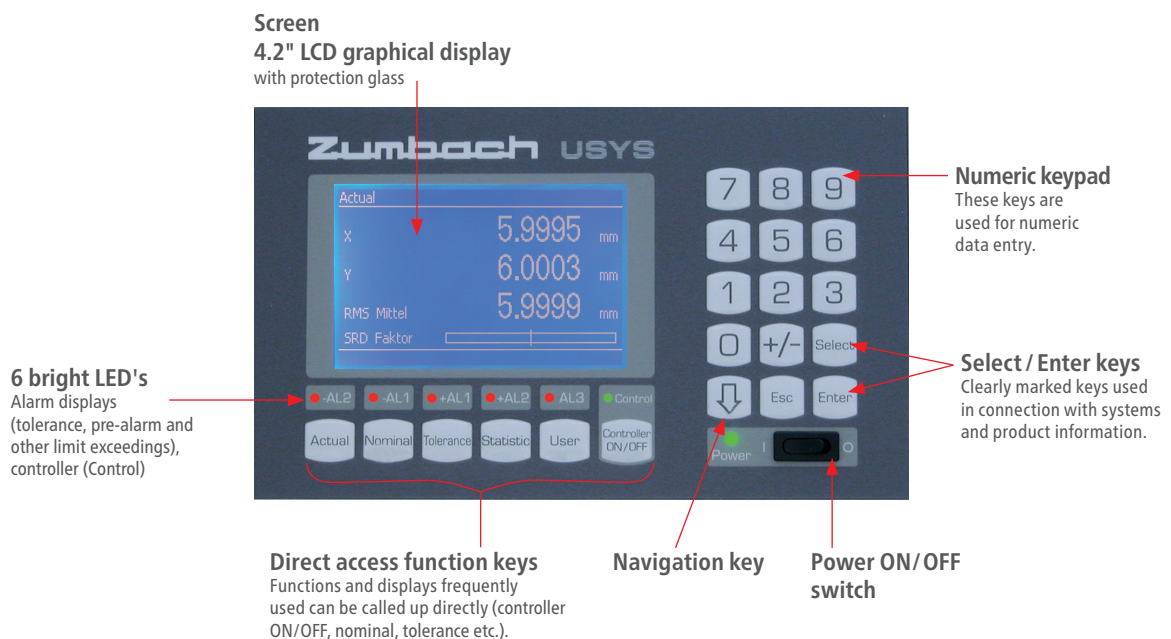
HIGH-TECH, INDUSTRIAL DATA ACQUISITION SYSTEM WITH A HUMAN TOUCH

The system features real-time, multi-tasking data processing and control. USYS 20 accepts measurements from a broad line of ZUMBACH gauges covering a diameter or width range from 0.012 mm (0.00047 in.) to 550 mm (21.6 in.) with a selectable resolution of up to 0.0001 mm (0.000004 in.).

- Complete system for one measuring point
- Simultaneous display of 3 measured values
- Industrial, rugged design
- High-contrast LCD monochrome screen (240 x 128 pixels)
- Alarm displays
- Real-time data collection
- Reel and session reports
- DDC – Direct Dynamic Control system
- SRD – Static Regulating Device

USER FRIENDLY CONTROL PANEL WITH EASY MENU NAVIGATION

Heavy duty industrial grade front panel. Membrane covered mechanical switches feature tactile and audio feedback.



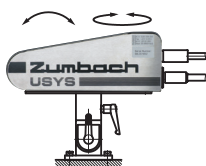
FLEXIBLE MOUNTING POSSIBILITIES

Table top use

Standard



With fixation set for table top
no. USY.0002.930



Wall mounting

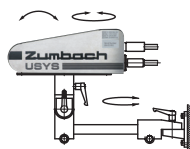
Using the fastening rails included
in the delivery.



By means of the rotary holder,
no. USY.0002.910

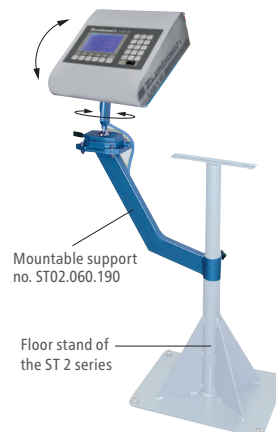


With pivot arm, no. USY.0002.920



Mounting onto a floor stand ST 2

Thanks to a mountable support
the USYS 20 table top unit can easily be
added onto a floor stand of the ST 2
series.



19" rack mounting



This 19" drawer allows the
mounting of 1 or 2 USYS 20.

Note:
A suitable housing is optionally
available (no. A32 100 0330).



REAR PANEL INPUTS, OUTPUTS AND PERIPHERALS (OPTIONS)

Measuring head connector

One unit from the wide range of digital 1, 2 or 3 axis ODAC diameter measuring heads can be connected. Instead of the diameter measuring head, it is also possible to connect a capacitance measuring system of the CAPAC J series.



Port 1 Serial interface

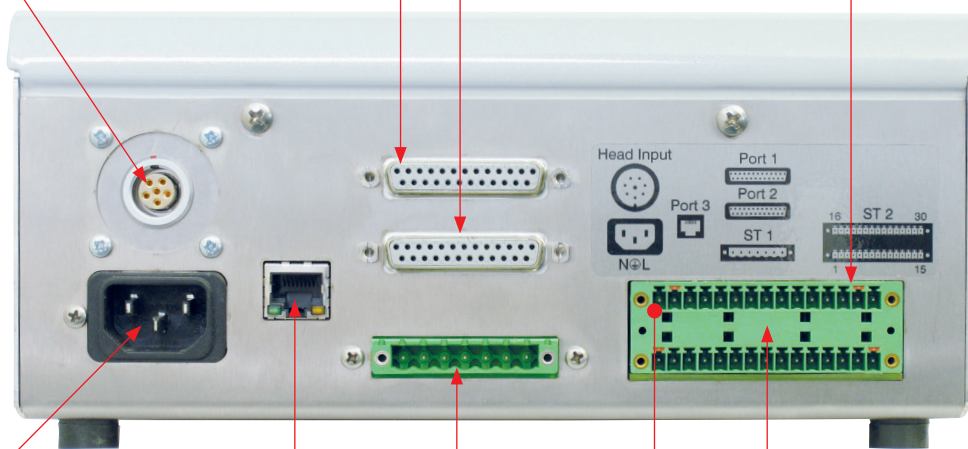
Can be configured for the connection with a printer (Continuous or label printer) or a remote display.

Port 2 Serial interface

For the communication with a higher level host computer or the connection with USYS Data Log from Zumbach or a remote display



MV Motorized vacuum controller



Mains connector/fuse

Integrated connector with built-in fuse and mains filter.

Port 3 Ethernet interface

With TCP/IP protocol for the integration of the USYS 20 into a local network (LAN). Communication with a higher level host computer or linked with USYS Data Log from Zumbach.

Relay output

Offers 3 configurable relay outputs (e.g. system alarm, tolerance alarm). It also enables the connection of an external control pulse for the automatic control of the equipment (e.g. vacuum controller).

I/O connector

Following inputs/outputs are available:
 - 4 digital inputs (e.g. statistics, start/stop, pause)
 - 5 digital outputs (tolerance alarms, pre-alarms)
 - 1 counter input (e.g. for the line speed)
 - 1 analogue output +/- 10 V

The connections can be extended, by means of the optional Static Regulating Device, with 2 additional digital inputs and 1 static regulating device (analogue input and output).

"SRD" Static Regulating Device

Control of line speed/extruder screw r.p.m.



MPK1-10T / PS 11130-A

Motorized potentiometer with servo valve for control of internal air support pressure



Line speed/footage counter input
Proximity detector



Event input
Lumps, neckdowns, spark failures, reel change etc.

Data collection
Start/stop and pause input

Chart recorder (analogue)

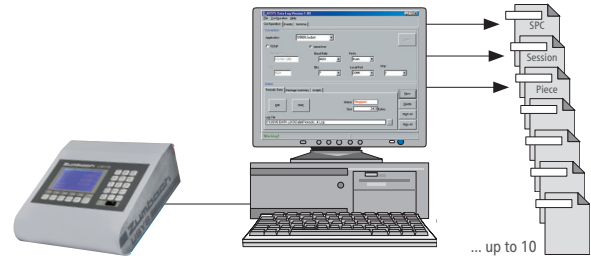
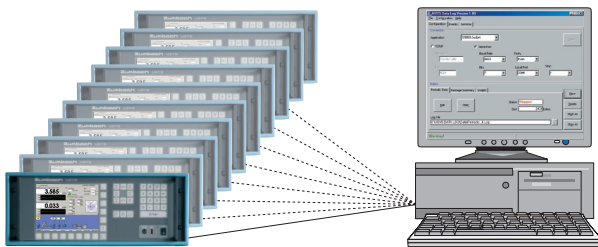


USYS DATA LOG

The USYS Data Log is a Windows™ based software, offering an easy way to configure specific data acquisition (logging and archiving) from ZUMBACH processors onto customer PCs. The measurement data can be collected from a single

instrument or from several ZUMBACH processors and saved in a text file format or in Excel™. USYS Data Log communicates with the processors through a serial interface or an Ethernet TCP/IP connection.

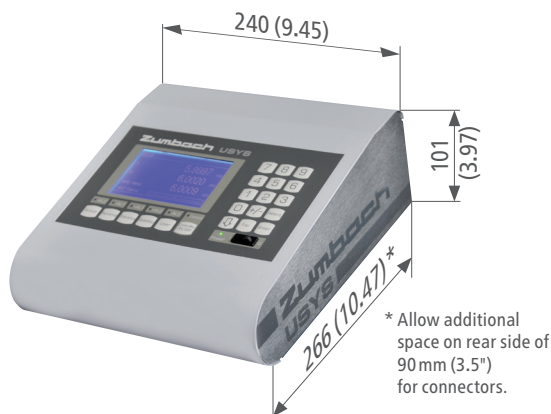
™ Windows and Excel are trademarks of Microsoft Corporation



Multiple Collection

Several USYS Data Log programs can run on the same PC, i.e. it is possible to collect the information of all Zumbach processors in the factory to only one single computer.

DIMENSIONS



Dimensions in mm (in.)

MAIN SPECIFICATIONS

Electrical power supply

Mains voltage: 115 V / 230 V~
Tolerance: -10...+6 %
Mains frequency: 48...62 Hz
Power: max. 200 VA

Temperature range

Operating: 0...50°C (32...120°F)
Transport / storage: -20...70°C (-4...140°F)

Protection

IP 51

Weight

Table top version: 3.4 kg (7.5 lbs.)
19" rack version: 11.5 kg (25 lbs.)

• Specifications are subject to change without notice

WORLDWIDE CUSTOMER SERVICE AND SALES OFFICES

Headquarters:
Zumbach Electronic AG
P.O. Box
CH-2552 Orpund
SWITZERLAND
Phone +41 (0)32 356 04 00
sales@zumbach.ch

BELGIUM, sales@zumbach.be
CHINA P.R., sales@zumbach.com.cn
FRANCE, ventes@zumbach.com.fr
GERMANY, verkauf@zumbach.de
INDIA, sales@zumbachindia.com

ITALY, zumit@zumbach.it
SPAIN, gestion@zumbach.es
TAIWAN, info@zumbach.tw
UK, sales@zumbach.co.uk

North American Headquarters:
Zumbach Electronics Corp.
140 Kisco Avenue
Mount Kisco, NY 10549-1407
USA
Phone +1 914 241 7080
sales@zumbach.com



USYS.004.5011.EN FEB.2018