

# SIMAC® 40/70/120

## Continuous surface inspection for all kind of products

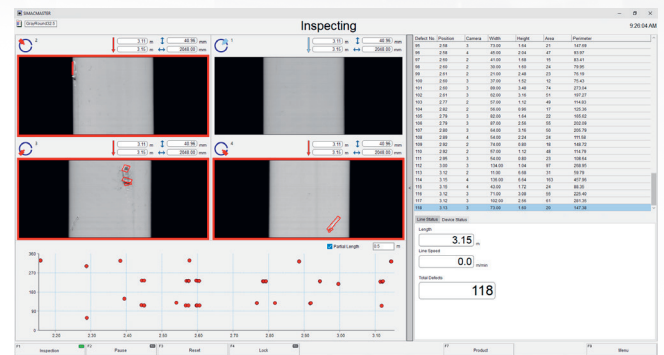
ZUMBACH's all-new SIMAC 40/70/120 is fulfilling today's needs for in-line surface inspection of extruded products like pipes, cables and hoses with the consistent implementation of machine vision and machine learning.

## Defect detection

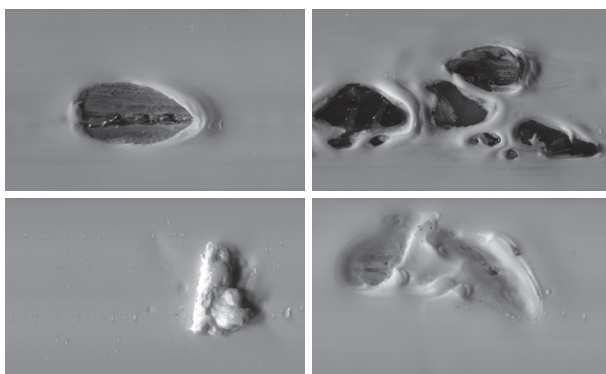
The SIMAC detects anomalies and material defects that are difficult to detect, such as compounds that are not fully crystallised, burnt material inclusions, missing coatings, scratches, ridges, colour defects, bubbles, cracks, holes, etc.

## Main Features

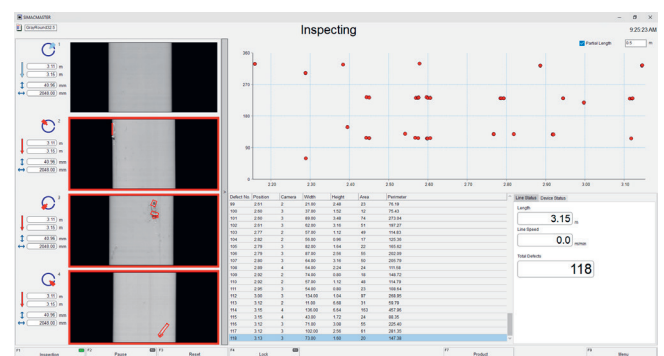
- Continuous in-line surface inspection
- The 4 cameras ensure 100% coverage even for small product thanks to overlapping zones.
- Advanced algorithms search in the image for defects based on pre-trained examples.
- Quick and easy introduction into production lines with the opening on the side
- Compact design allows easy maintenance
- Works with all surfaces and colors
- Data recording for later analysis and defect detector training.
- Storage of defects in the data base
- Ultra-bright LED panels allow the detection of defects on darkest surfaces



SIMACMASTER main screen

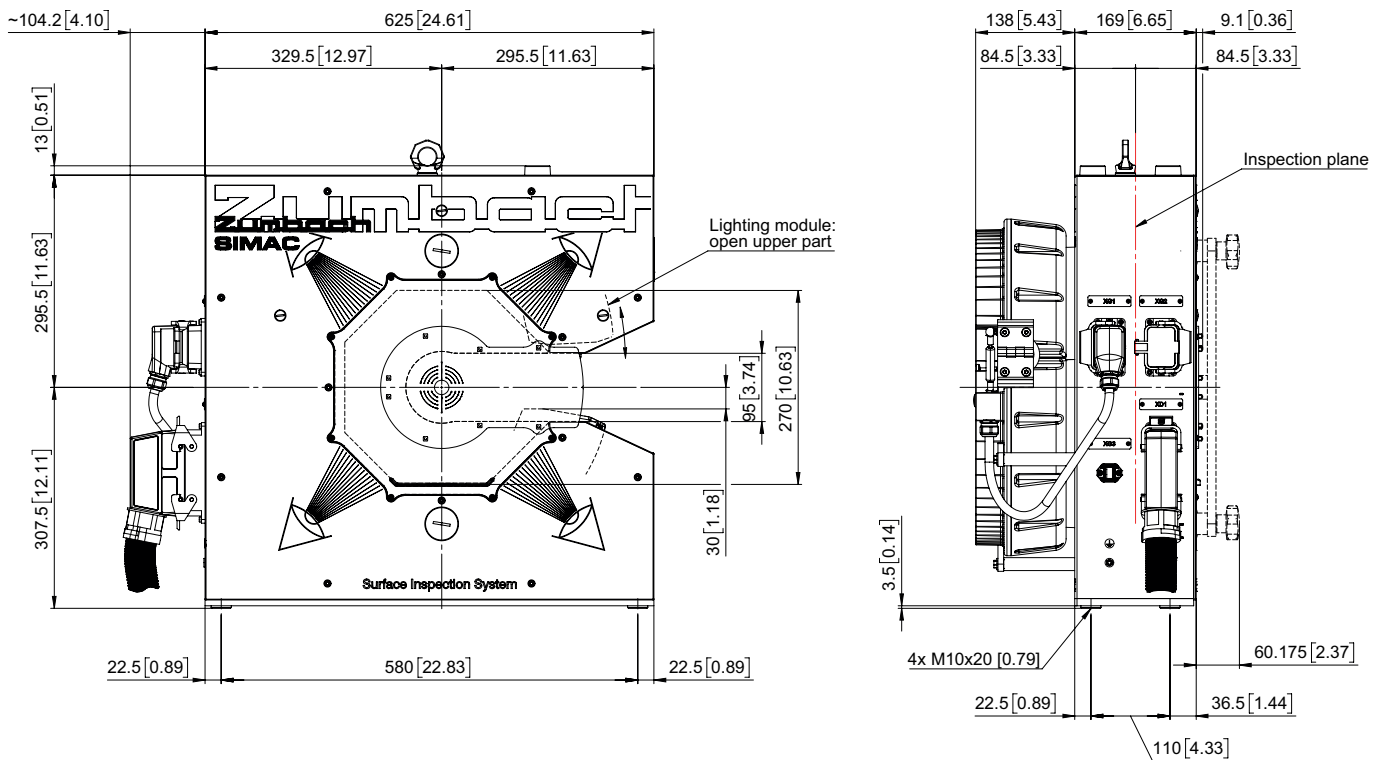


The optical system detects all kinds of surface variations, categorizing them as defects on the most diverse, continuously produced products.



SIMACMASTER screen with typical defects

## Dimensions



Dimensions in mm (inch)

## Technical data

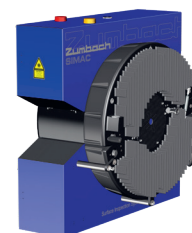
Model SIMAC	40	70	120
Product shapes	Round		
Measuring field	∅ 40 mm (1.57 in.)	∅ 70 mm (2.76 in.)	∅ 120 mm (4.72 in.)
Min. product dimension	2 mm (.079 in.)	14 mm (.55 in.)	30 mm (1.18 in.)
Max. product dimension	36 mm (1.42 in.)	63 mm (2.48 in.)	108 mm (4.25 in.)
Min. detectable defect size	0.1 mm (.0039 in.)	0.2 mm (.0079 in.)	0.4 mm (.016 in.)
Max. scan rate	140'000 1/s		
Light source	LED white		
Number of cameras	4		
Max. line speed	130 m/min		
Type of protection	IP 54		
Weight	approx. 48 kg (105.82 lbs.)		

## Processor and display unit

- Graphical user interface with data base, remote access, I/O's
- Industrial PC with touch screen

Data acquisition and processing system	
Operating system	Windows™
Display	High resolution wide screen display
Network interface	2 x Ethernet (1 x customer / 1 x Local)
Communication interface	Digital in-/outputs, relay output, Webserver, OPC UA

™ Windows is a trademark of Microsoft Corporation



Measuring unit



Local processing unit with a touch screen monitor on a swivel arm

\* Technical specifications are subject to change without notice

Switzerland (H.Q.): ZUMBACH Electronic AG, P.O. Box, CH-2552 Orpund, Phone +41(0)32 356 04 00, Fax +41(0)32 356 04 30, E-Mail: sales@zumbach.ch  
Benelux • China • Czech Republic • France • Germany • India • Italy • Spain • Taiwan • United Kingdom • USA

[www.zumbach.com](http://www.zumbach.com)