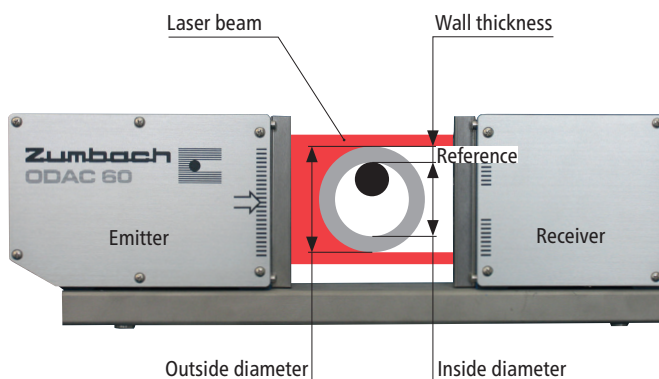


## QC 4

The QC 4 system consists of a high precision diameter measuring head combined with a processor unit USYS 20 with special software evaluating the measured values. The system provides fast and accurate measurements of manufactured parts or cut samples of extruded products. QC 4 can be used either in quality control (QC) laboratories or on plant floors. It provides operators a simple and repeatable solution for measuring parts and immediate notification of meeting specification within the given tolerances.



### Operating Principle



### Accurate and User Friendly Method of Measurement

- The sample to be tested is placed on a reference pin.
- The operator is free to make as many measurements around the circumference of the sample as desired.
- 2 types of statistics:
  - 1 measurement over several samples
  - Several measurements over 1 sample
- By simply pressing one key the min., max., average and standard deviation of the sample measurements are calculated and are available to printout.
- The calculated values can be uploaded to a host computer for further processing.

## Technical Data

### Measuring Head ODAC 60J

Max. diameter	50 mm (1.97 in.)
Max. wall thickness	10 mm (.39 in.)
Repeatability (3 $\sigma$ )	0.25 $\mu$ m (+/- .0000098 in.)
Scan rate	1000/s (option 2000/s)
Scanning speed	157 m/s (option: 315.4 m/s)
Light source	Visible laser diode, laser class 2
Protection class	IP 65



### Processor USYS 20

- Display
- High contrast 4.2" LCD monochrome screen 240 x 128 pixels.  
Selectable resolution of up to 0.0001 mm (.000004 in.) of outside diameter, inside diameter, wall thickness.
  - 6 bright LED alarm displays (tolerance, pre-alarm and other limit exceedings).

- Functions
- Display of measurement value
  - Communication with computer
  - Printing

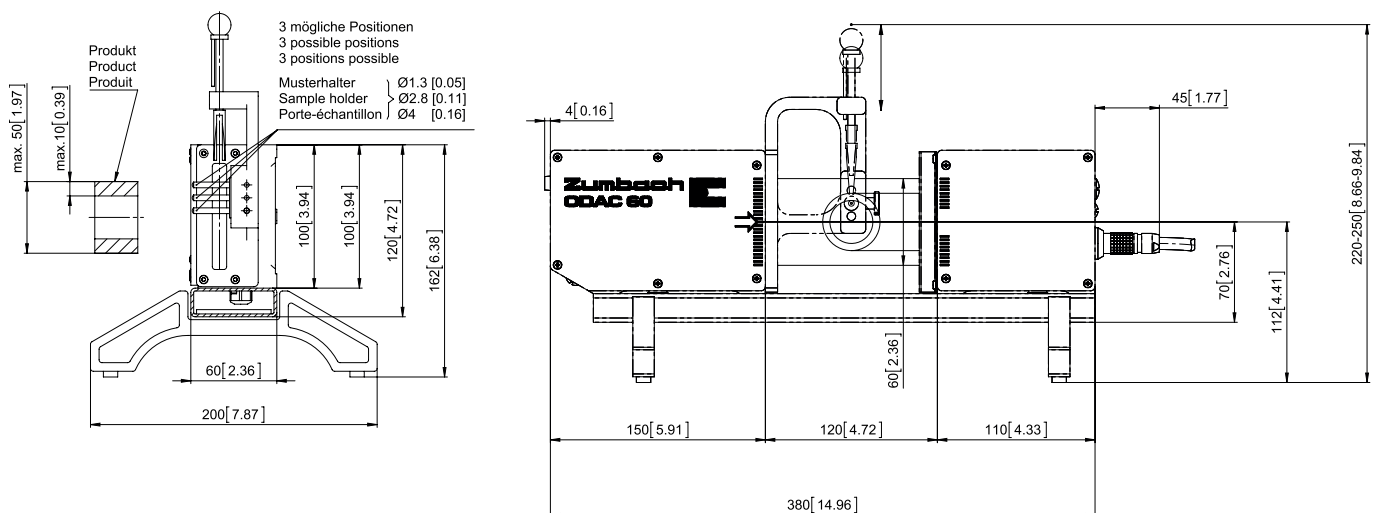
- Features
- 1 serial interface RS-232/-422/-485 (configurable for the printing of the statistics or remote display)
  - 1 serial interface RS-232/-422/-485 (configurable, galvanic separated)
  - +/- tolerance alarms
  - I/O connector with the following inputs and outputs:
    - 3 relay outputs for tolerance
    - 4 digital inputs (e.g. Start/Stop and pause, statistics, signal for the logging of the individual measurements into the statistics)
    - 5 digital outputs (tolerance alarms)
    - 1 analogue output +/-

Protection class IP 51

Versions  Table top or  19" rack mountable

• Technical specifications are subject to change without notice

## Dimensions



Dimensions in mm (inch)

Switzerland (H.Q.): ZUMBACH Electronic AG, P.O. Box, CH-2552 Orpund, Phone +41(0)32 356 04 00, Fax +41(0)32 356 04 30, E-Mail: sales@zumbach.ch  
Benelux • China • Czech Republic • France • Germany • India • Italy • Spain • Taiwan • United Kingdom • USA

[www.zumbach.com](http://www.zumbach.com)